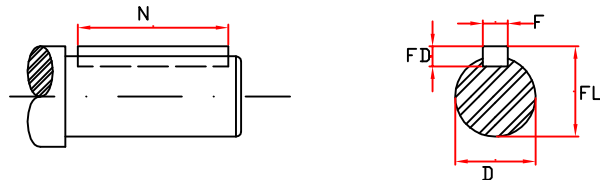


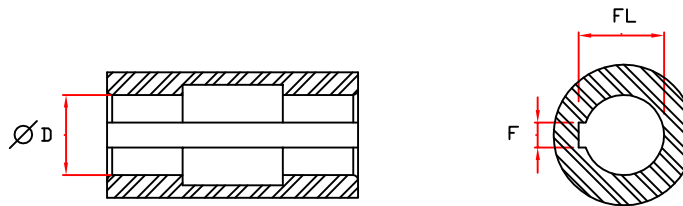
CARGAS RADIAIS E CHAVETAS

DIMENSÕES DE CHAVETAS



$\varnothing D$	$\varnothing 11$	$\varnothing 16$	$\varnothing 19$	$\varnothing 23$	$\varnothing 24$	$\varnothing 28$	$\varnothing 29$	$\varnothing 32$	$\varnothing 38$	$\varnothing 40$	$\varnothing 42$	$\varnothing 46$	$\varnothing 55$	$\varnothing 65$
FL	12.5	18	21.5	26	27	31	32	35	41	43	45	49.5	58.5	70
FD	4	5	6	7			8			8		9		11
F	4	5	6	8			10			12		14		18

REDUTORES VAZADOS



$\varnothing D$	$\varnothing 16$	$\varnothing 19$	$\varnothing 23$	$\varnothing 29$	$\varnothing 42$	$\varnothing 46$	$\varnothing 55$	$\varnothing 65$
FL	18	21.5	26	32	45	49.5	58.5	70
FD	5	6	7	8	8	11	11	11
F	5	6	8	10	12	18	18	18

rpm Saída	CARGAS RADIAIS EIXOS DE SAÍDA							
	SC-00	SC-01	SC-02	SC-03	SC-04	SC-05	SC-06	SC-07
20	300	500	650	930	1060	1200	1600	1800
30	300	480	650	740	850	1100	1430	1530
40	300	430	550	650	740	1000	1300	1400
50	280	380	500	570	660	900	1170	1280
60	260	360	480	520	600	820	1060	1150
70	240	330	440	480	570	760	970	1050
80	230	300	410	460	540	710	900	980
90	220	270	380	440	520	660	850	920
100	200	260	360	420	490	630	800	
110	190	250	350	380	480	580		
120	180	240	340	370	450			
130	170	230	330	360				
140	170	210	330	360				
150	170	210	320	360				
160	170	210	320	350				
170	170	210	310	350				

FR Eixo saída Kg